

Installation Instructions

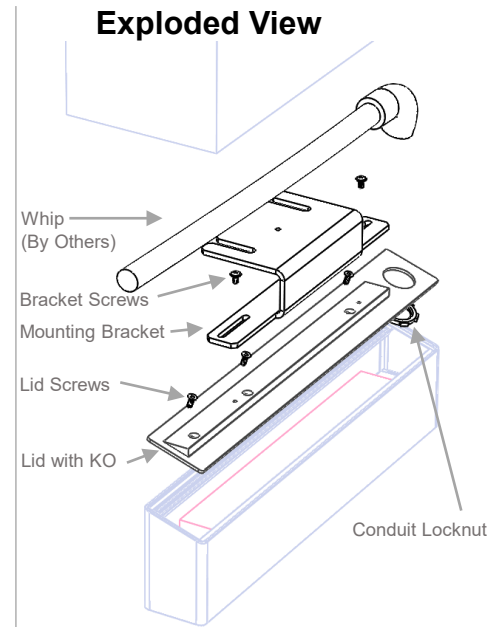
Hero Architectural – Lid Power



Important Safety Instructions

IMPORTANT: NEVER attempt any work without shutting off electricity at main fuse box or breaker panel.

- Read all instructions before installation, save a copy of these instructions
- System is intended to be installed by a qualified electrician in accordance with the National Electrical Code and local codes and regulations
- Always ensure the fixture and bracket are properly grounded
- Ensure that all screws and fasteners are properly tightened
- Minimum 90°C supply conductors must be used
- **All parts must be used as indicated in these instructions.** Do not substitute any parts, leave parts out, or use any parts that are worn or broken.
- Conduit must be wired to luminaire prior to installation on mounting bracket
- Do not pull or strain conductors inside conduit
- Attachment of bracket to building is provided by others



Wiring Instructions

1. Locate lighting fixture and KO plug (red).
2. Remove Lid and KO plug from lighting fixture by unthreading the single Lid Screw.
3. Slip strain relief fitting through Lid KO opening and push ~100mm stripped outer casing cable through fitting. Wire the conductors into the power supply. Ground should be wired to the ring lug terminal using the supplied lever nut.
Conductor Colors: Brown (Hot), Blue (Neutral), Green (Ground), Purple (Dali+), Gray (Dali-). Refer to LED Driver datasheet for wiring requirements.
4. Ensure that there is proper slack in the conductors such that they are not under tension upon installation.
5. Re-attach Lid back onto luminaire using supplied Lid Mounting Screws (Black Button Head M3 x 10mm). **Double check that wires are not pinched between the housing and the lid.**



Installation Instructions

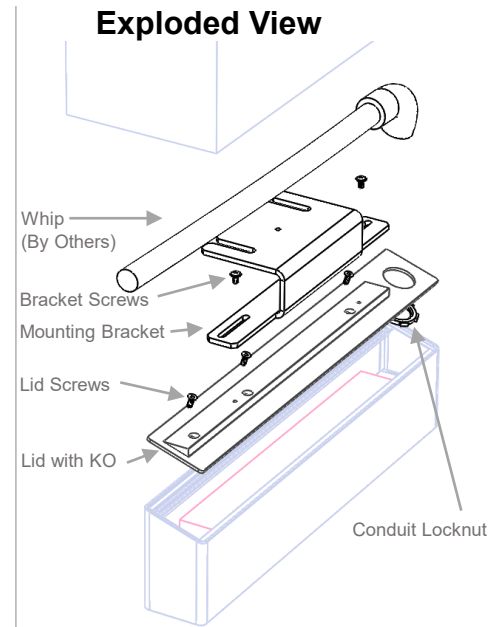
Hero Architectural – Lid Power



Important Safety Instructions

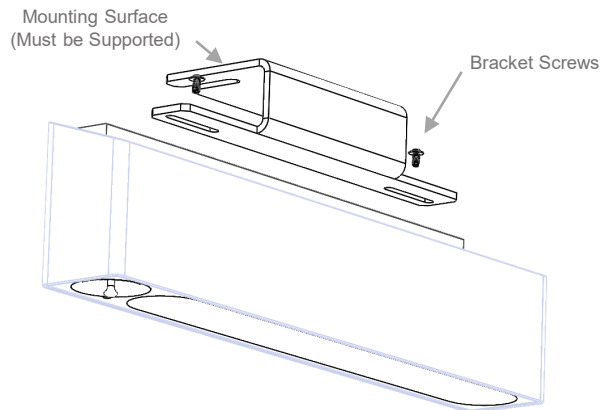
IMPORTANT: NEVER attempt any work without shutting off electricity at main fuse box or breaker panel.

- Read all instructions before installation, save a copy of these instructions
- System is intended to be installed by a qualified electrician in accordance with the National Electrical Code and local codes and regulations
- Always ensure the fixture and bracket are properly grounded
- Ensure that all screws and fasteners are properly tightened
- Minimum 90°C supply conductors must be used
- **All parts must be used as indicated in these instructions.** Do not substitute any parts, leave parts out, or use any parts that are worn or broken.
- Conduit must be wired to luminaire prior to installation on mounting bracket
- Do not pull or strain conductors inside conduit
- Attachment of bracket to building is provided by others



Mounting Instructions

1. Ensure that conduit or cable is securely attached to the Lid of the light fixture.
2. Install bracket on fixture using provided bracket screws (#8-32). Adjust final position of fixture to desired position. Ensure no interference or obstruction of conduit or cable.
3. Mount bracket to supported surface using attachment means provided by others at the specified mounting points.
4. **If position of fixture or bracket needs to be adjusted, fully loosen fasteners to prevent damage to paint. Do not force or slide fixture against bracket.**



Wiring

1. Attach cable/conduit at junction box with appropriate fitting, provided by others
6. Connect building supply ground wire (green or bare copper) to fixture ground.
7. Connect building supply Live and fixture Live (Brown) wires.
8. Connect building supply Neutral and fixture Neutral (Blue) wires.
9. Connect control control wires as appropriate.

